

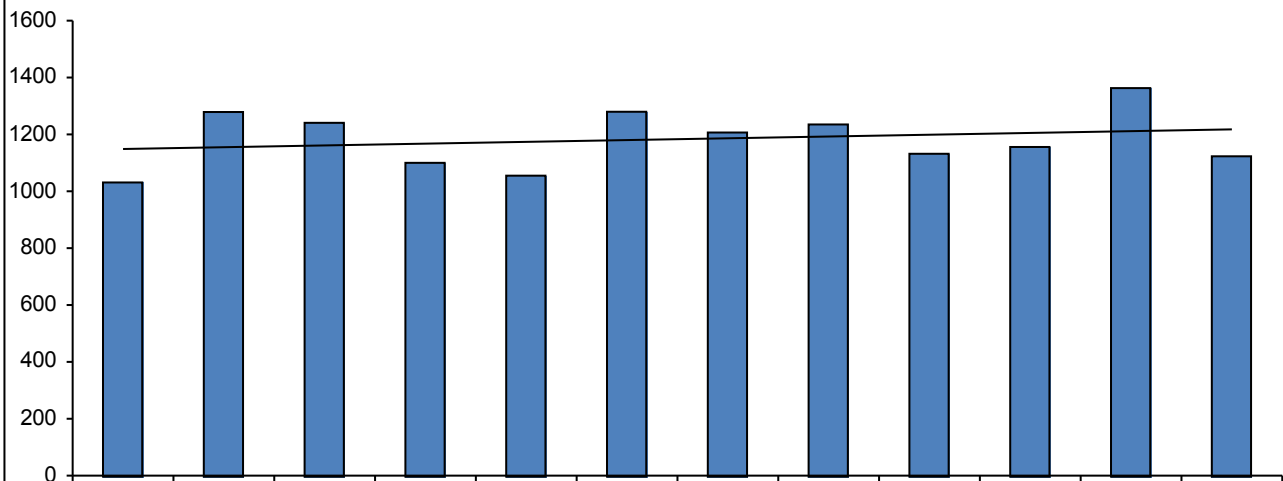
Children and Families Monthly Dataset - Key Performance Measures

Jul 2015

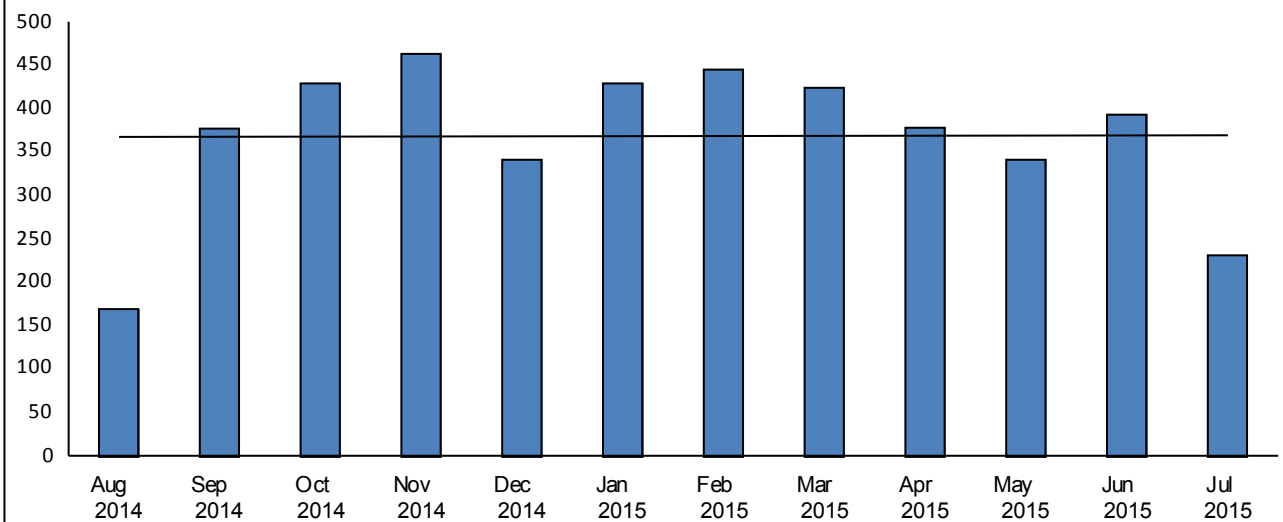
Number

Percentage

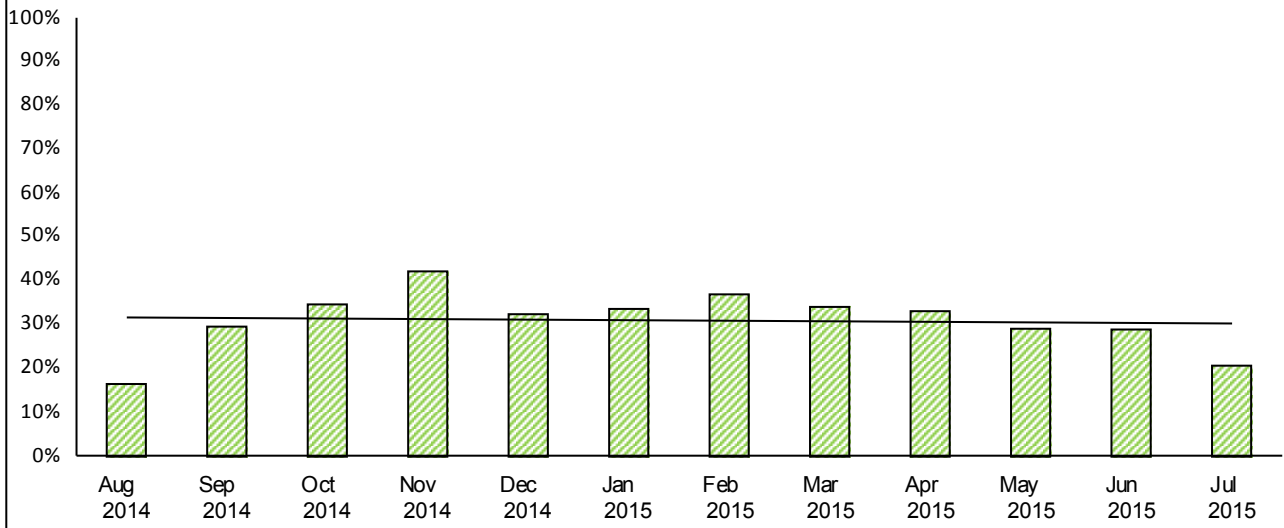
M1 - Number of contacts received (includes contacts that become referrals)



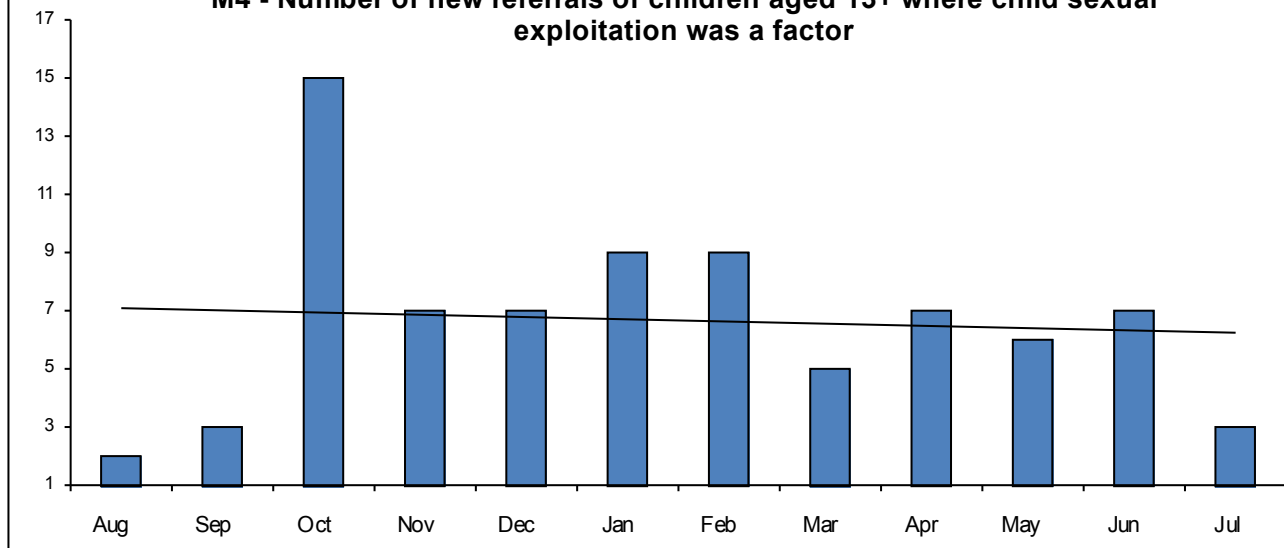
M2 - Number of new referrals of Children In Need



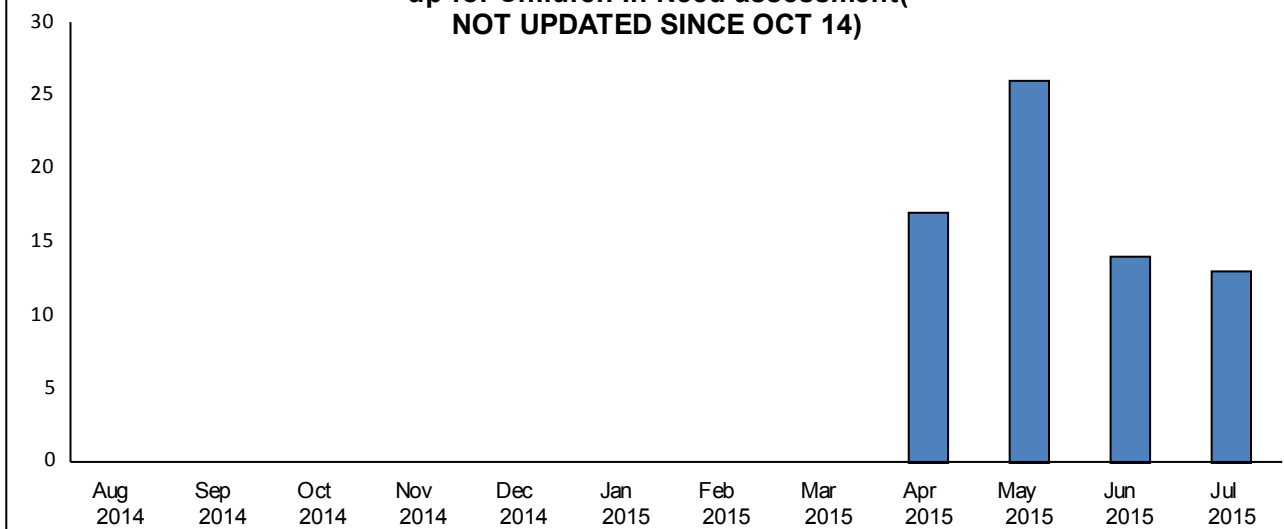
M3 - Percentage of all contacts that become new referrals of Children In Need

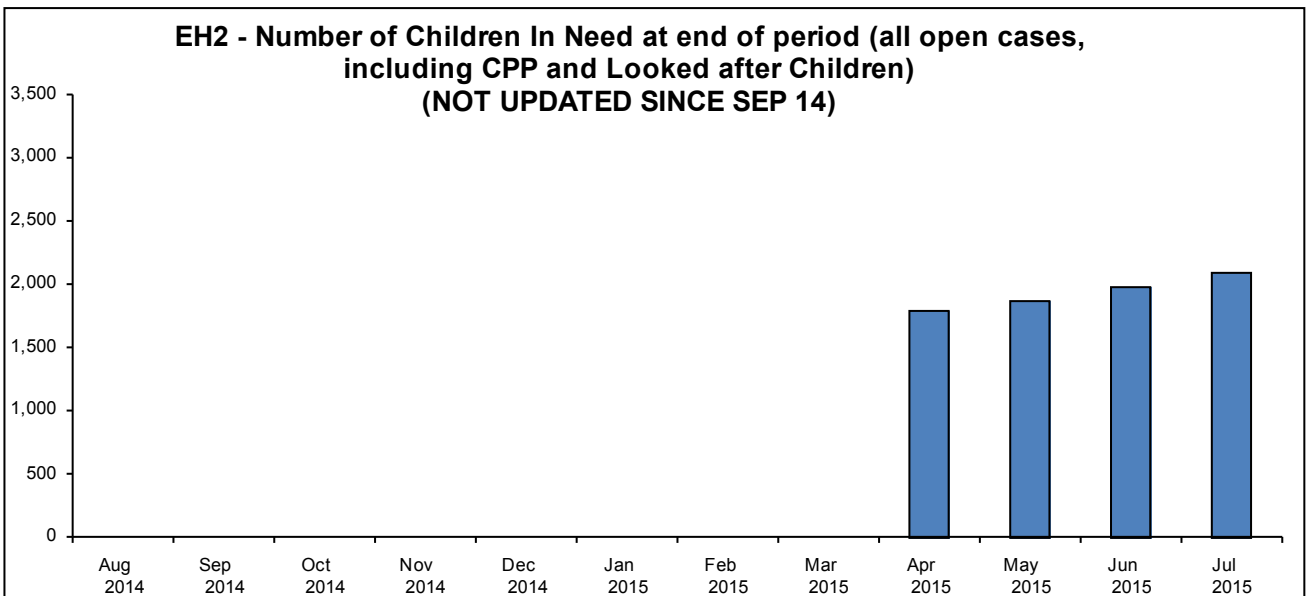
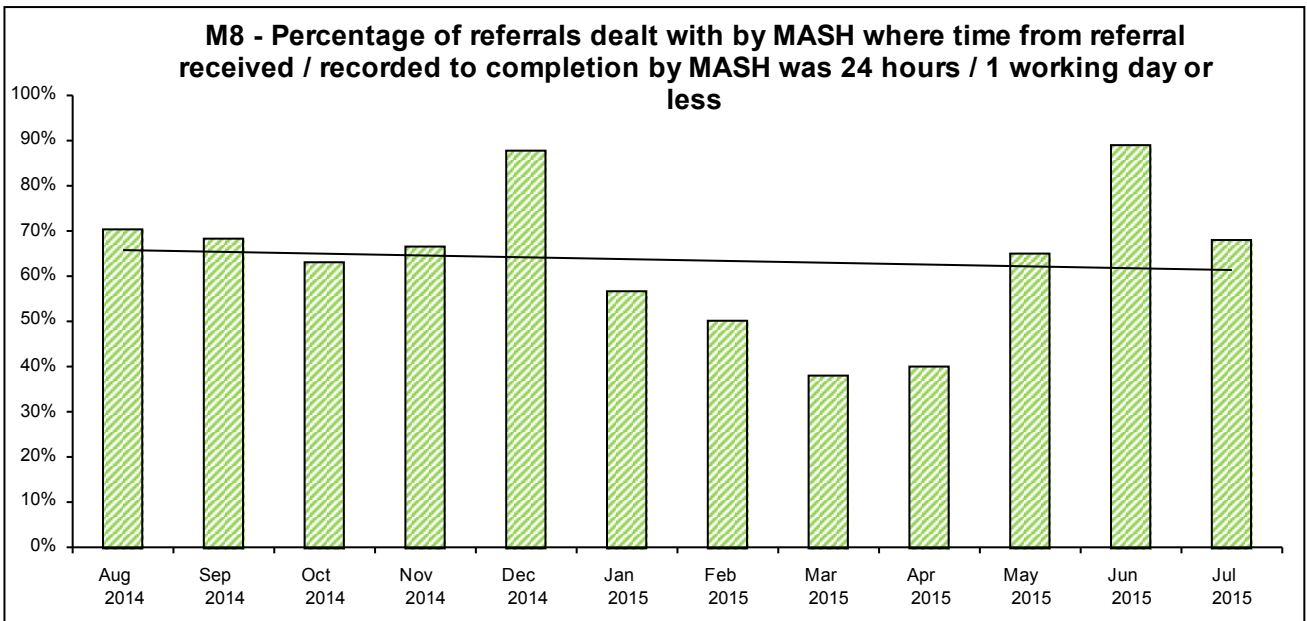
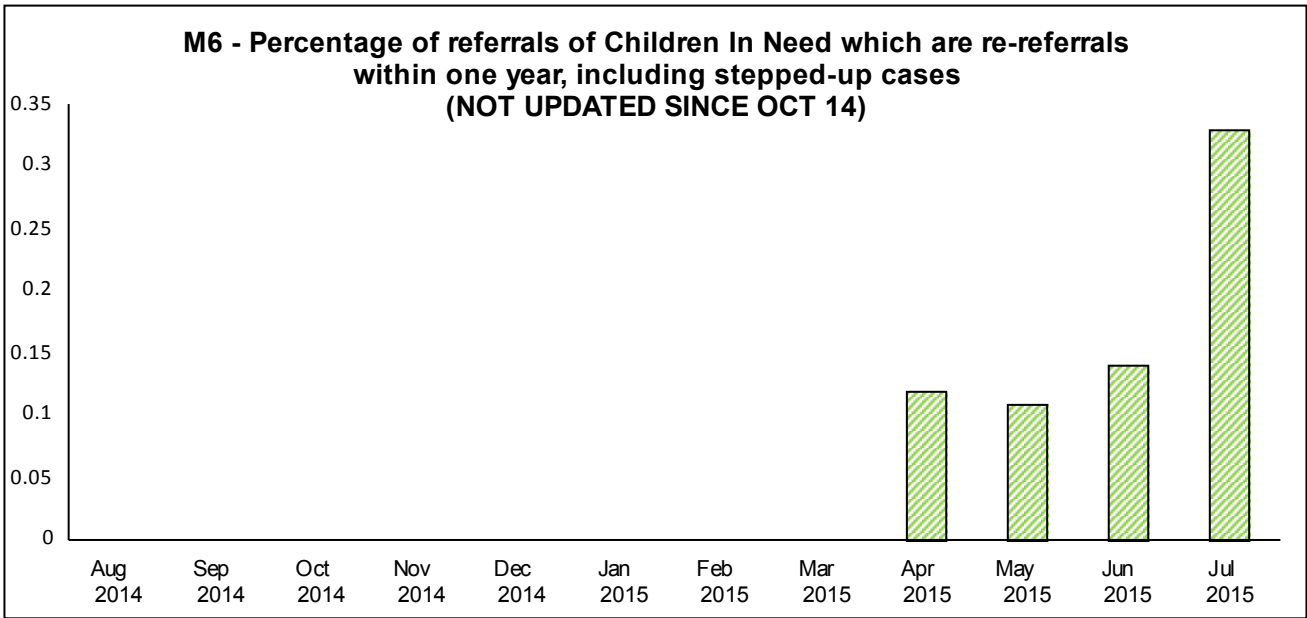


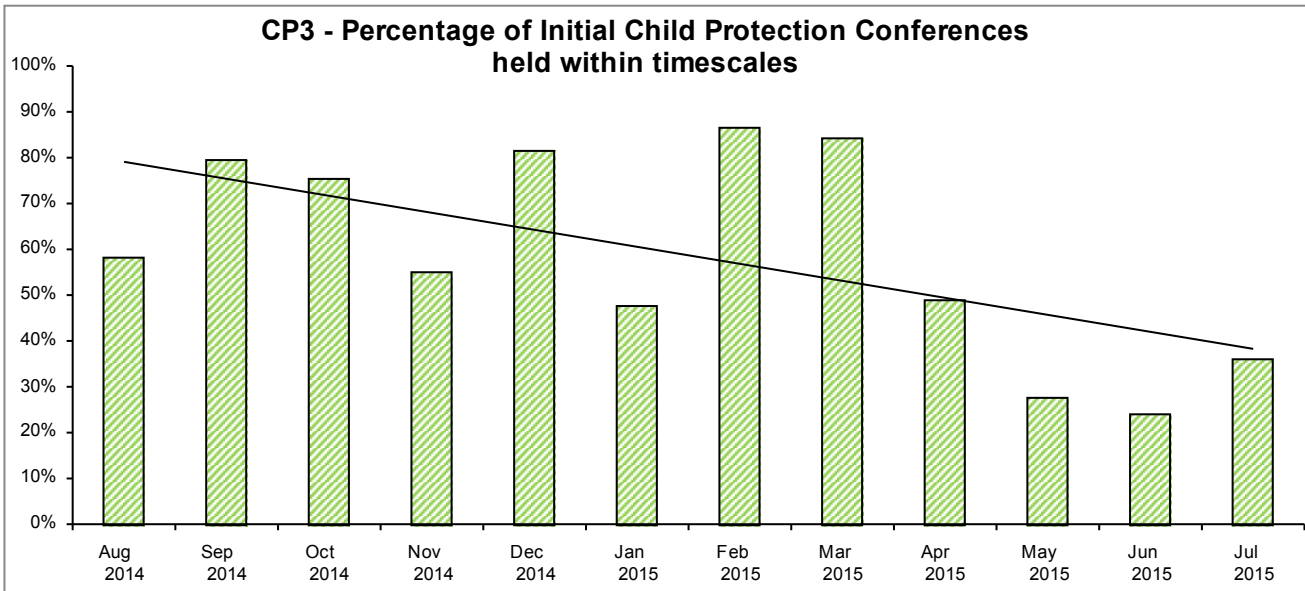
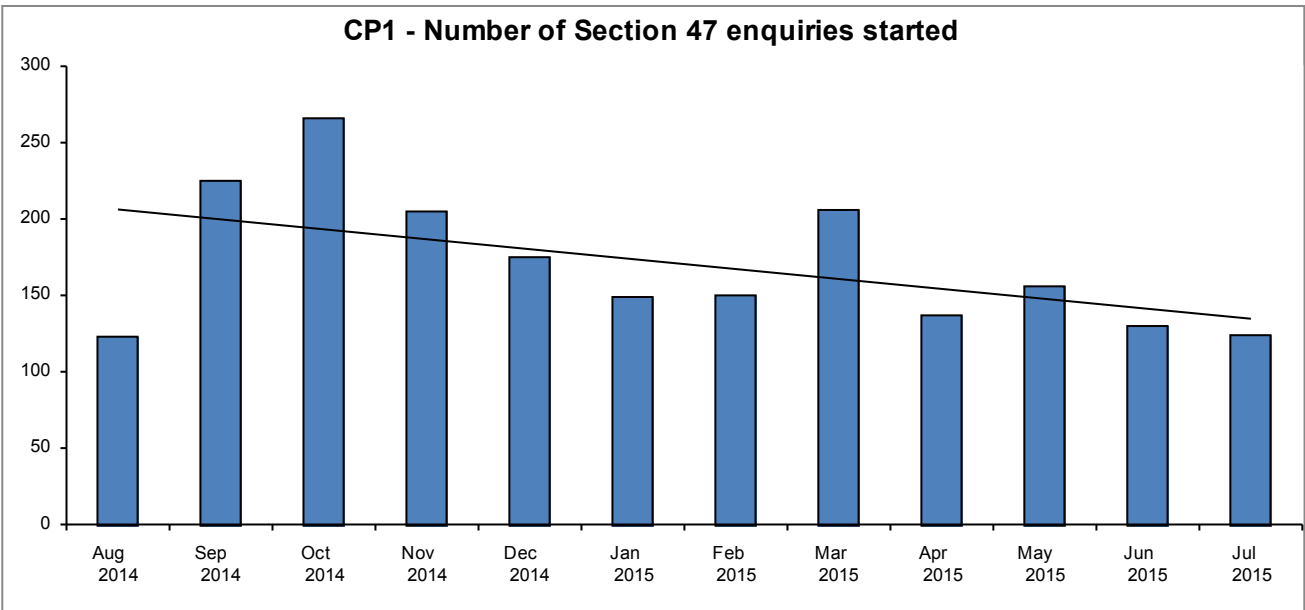
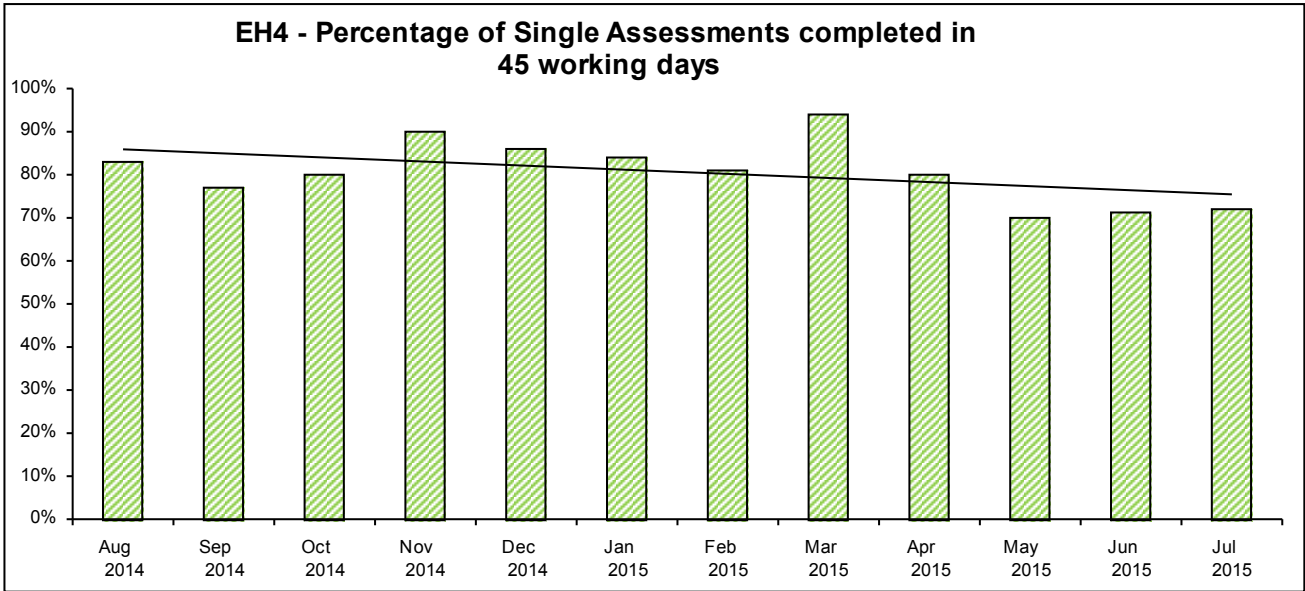
M4 - Number of new referrals of children aged 13+ where child sexual exploitation was a factor

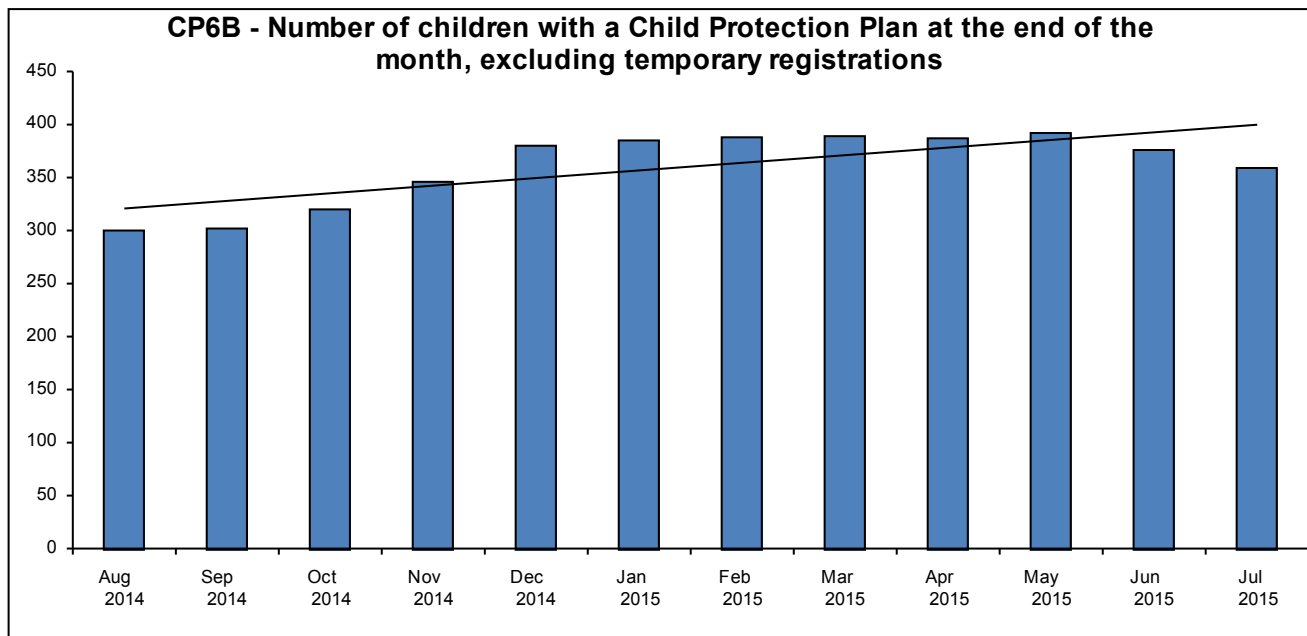
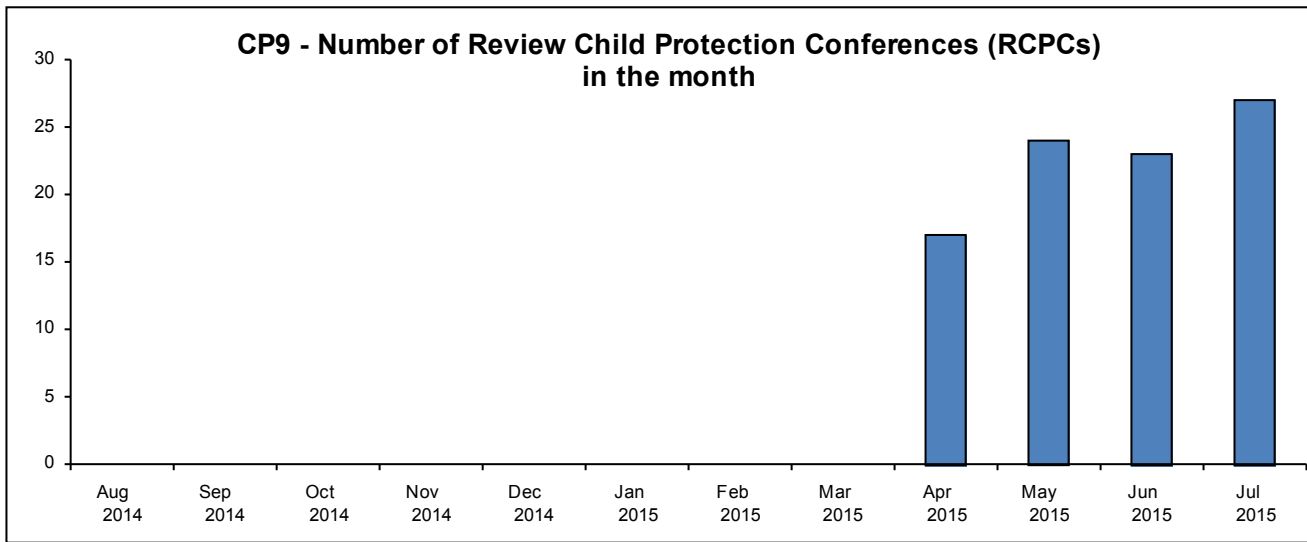
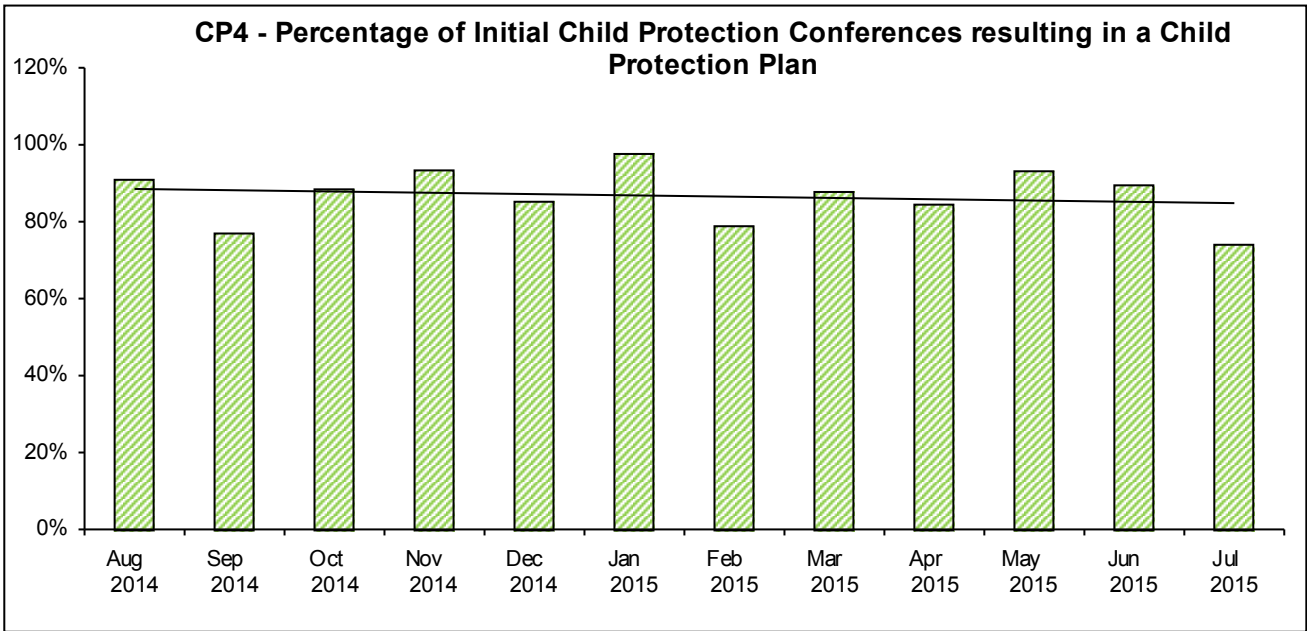


M5 - Number of children receiving Universal Help services who are stepped up for Children In Need assessment (NOT UPDATED SINCE OCT 14)

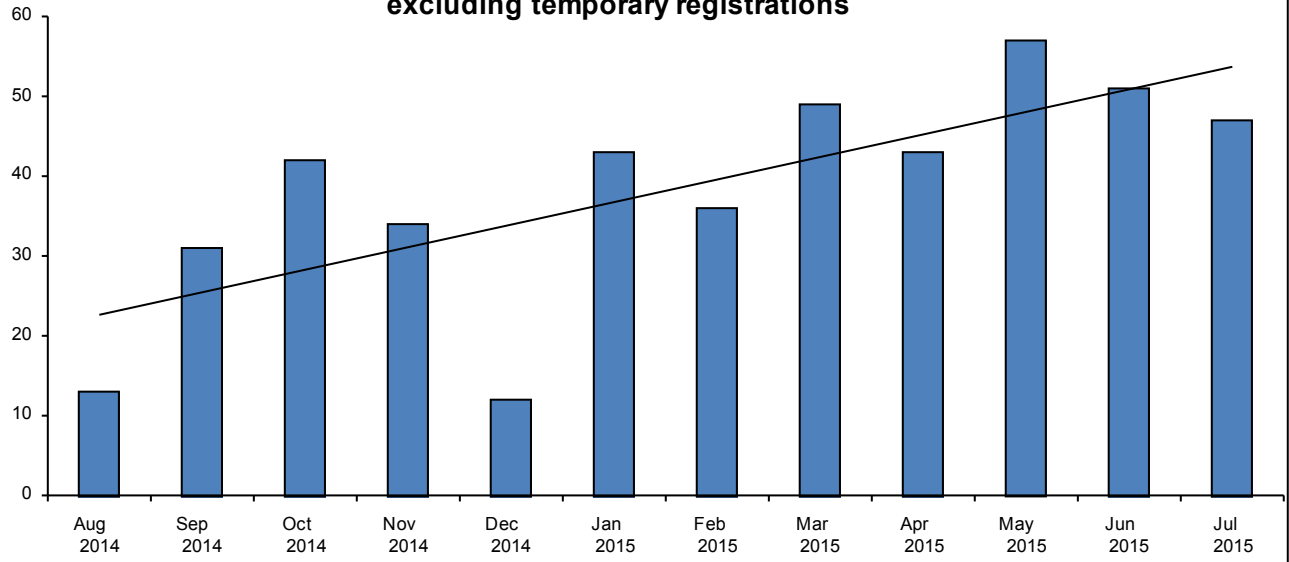


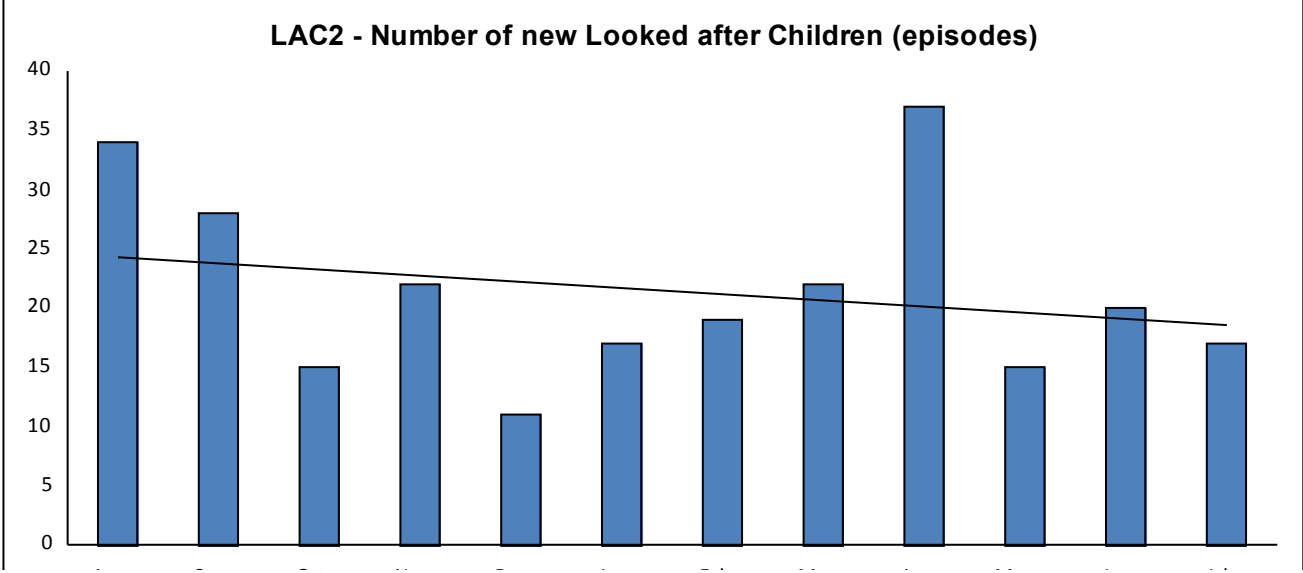
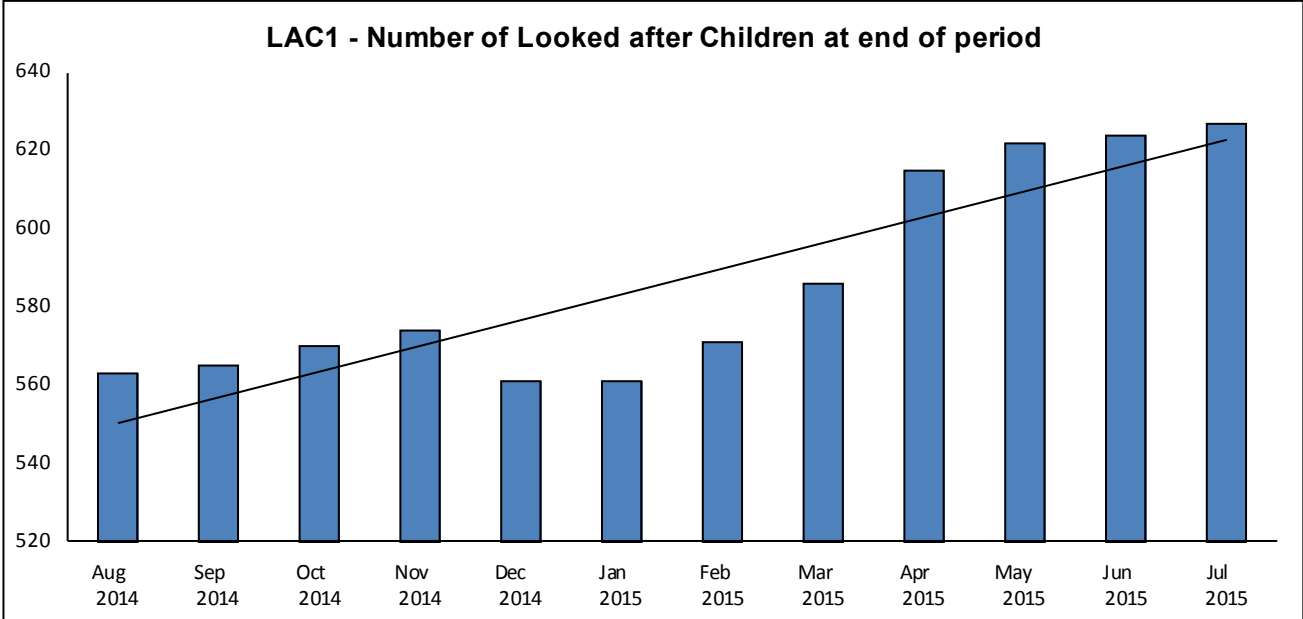
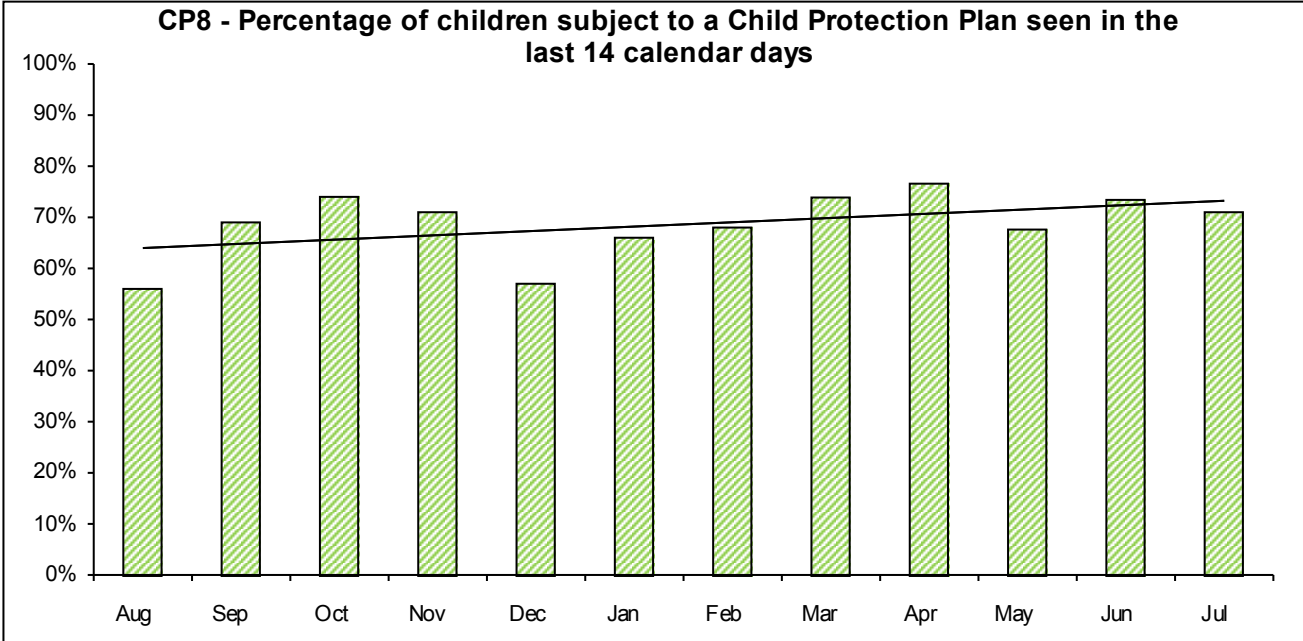




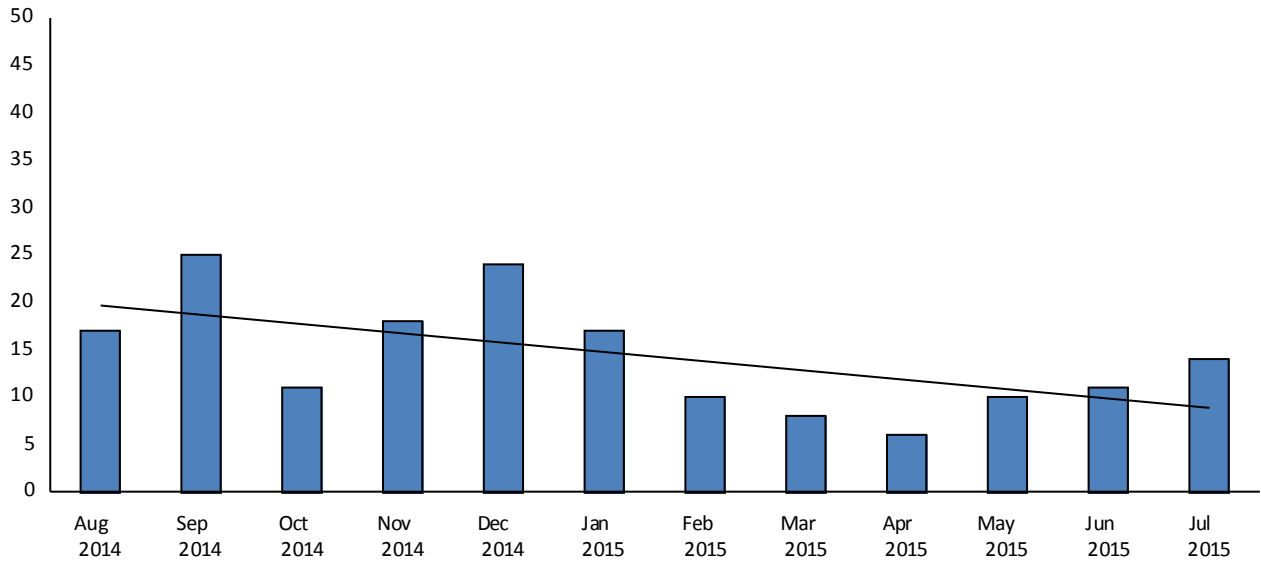


**CP7 - Number of ceasing Child Protection Plans,
excluding temporary registrations**

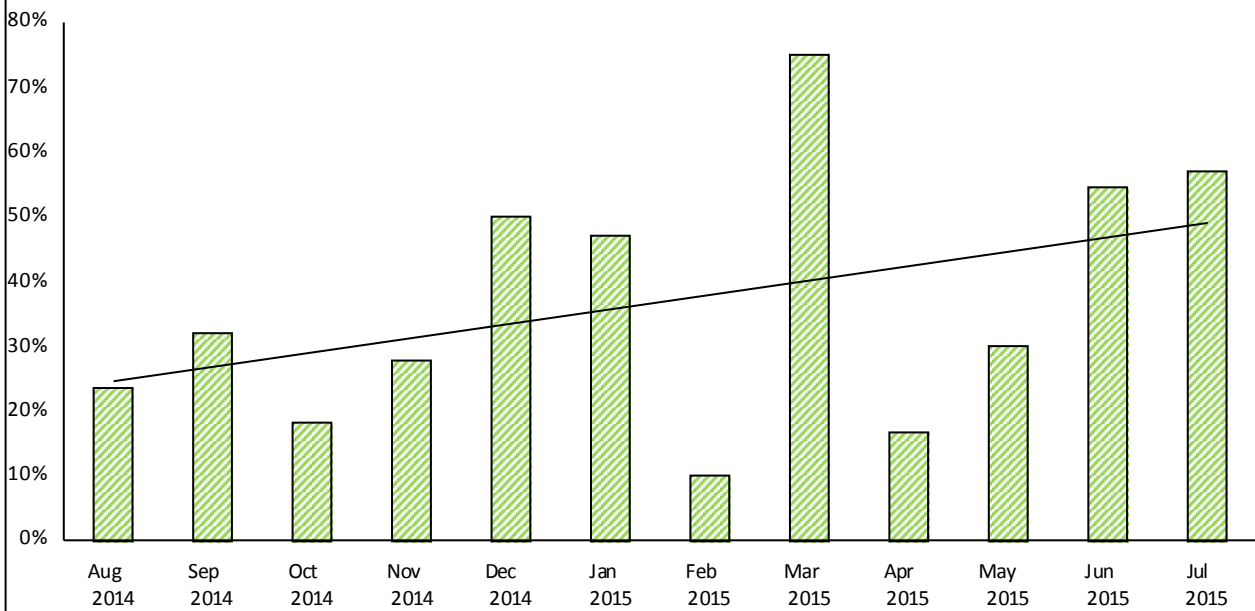




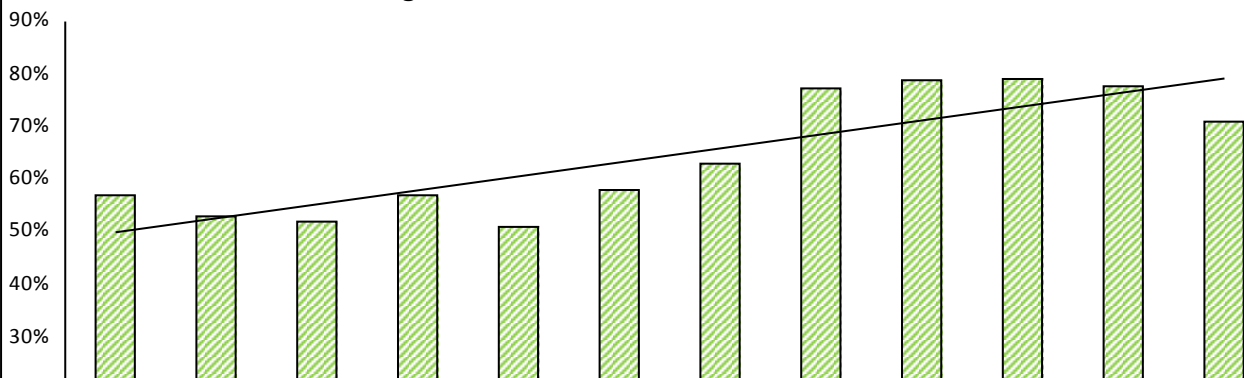
LAC3 - Number of ceasing Looked after Children (episodes)

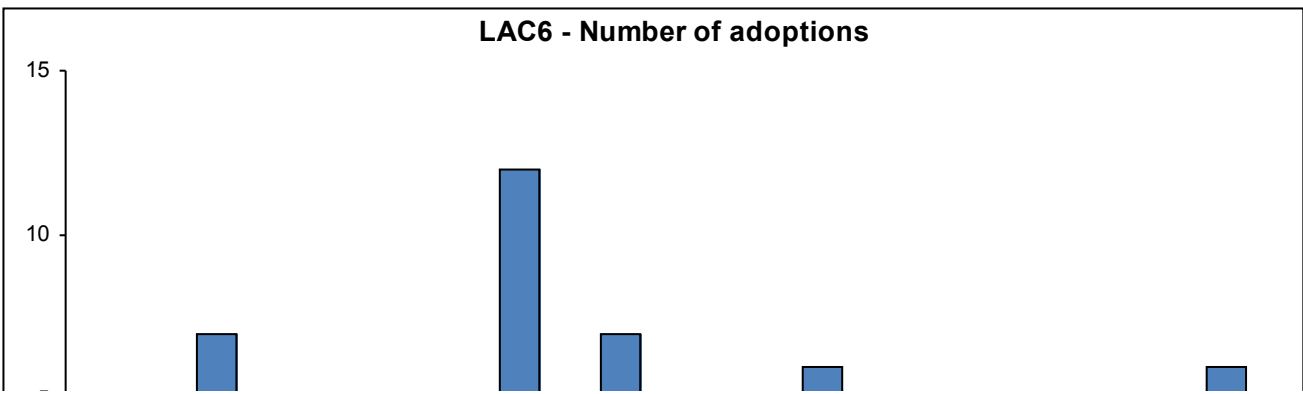
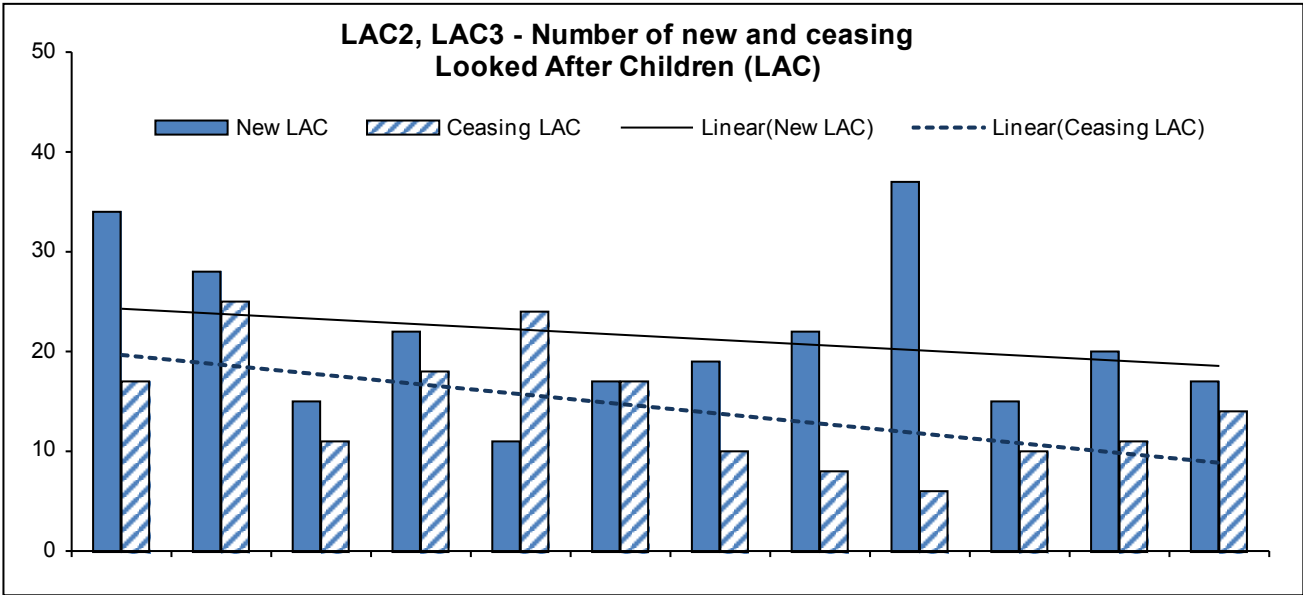
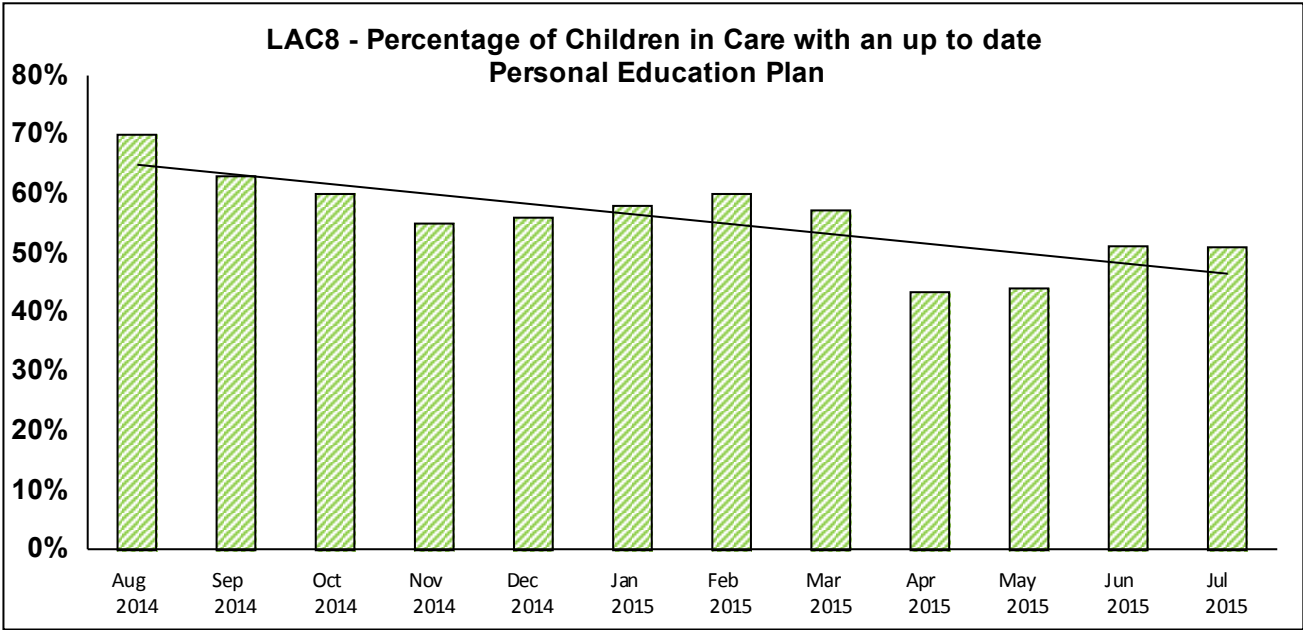
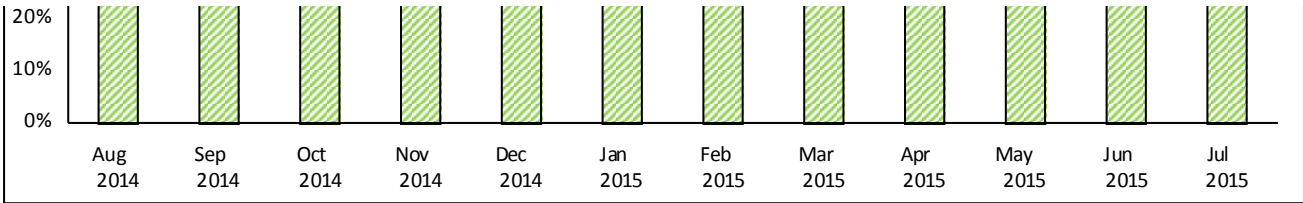


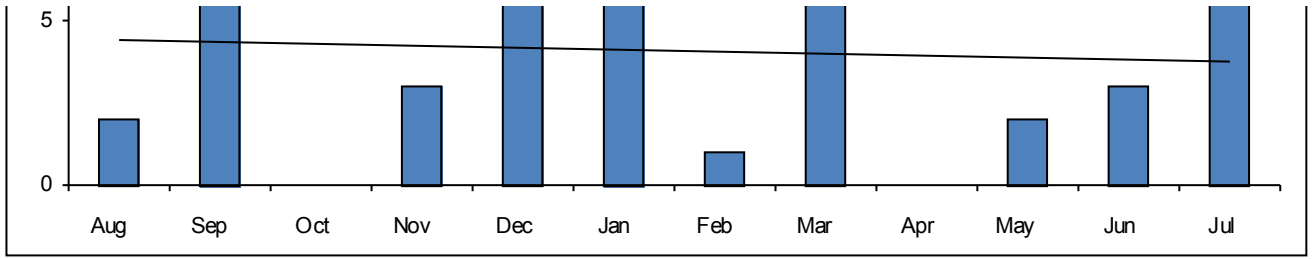
LAC5 - Percentage of ceasing Children in Care where end reason was Special Guardianship Order (E43, E44) or adoption (E11, E12)



LAC7 - Percentage of Looked after Children visited within timescales







Children and Families Monthly Dataset																							
Jul 2015									Qualitative measures:			Key to direction of travel:											
									Positive change	Similar	Negative change				Increase: 10% or more	↑	Similar	➡	Decrease: 10% or more	↓			
Measure Ref	Performance Area	Description	Jul 2014	Aug 2014	Sep 2014	Oct 2014	Nov 2014	Dec 2014	Jan 2015	Feb 2015	Mar 2015	Apr 2015	May 2015	Jun 2015	Jul 2015	% change from same period last year	12 month average	Max. value in last 12 months	Latest SN (annual %, or annual figure / 12)	Latest national (annual %, or annual figure / 12)			
M1	MASH	Number of contacts received (includes contacts that become referrals)	1256	1031	1279	1241	1100	1055	1280	1207	1235	1132	1156	1363	1123	↓ (11)	1184	1363	tbc	tbc			
M2	MASH	Number of new referrals of Children In Need	437	169	377	429	463	341	429	445	424	378	341	393	231	↓ (47)	368	463	tbc	tbc			
M3	MASH	Percentage of all contacts that become new referrals of Children In Need	35%	16%	29%	35%	42%	32%	34%	37%	34%	33%	29%	29%	21%	↓ (41)	31%	42%	tbc	tbc			
M6-QL	MASH	Percentage of referrals of Children In Need which are re-referrals within one year	Revised measure from April	Revised measure from April	Revised measure from April	Revised measure from April	Revised measure from April	Revised measure from April	Revised measure from April	Revised measure from April	Revised measure from April	12%	11%	14%	33%	n/a	17%	33%	Local indicator	Local indicator			
M4	MASH	Number of new referrals of children aged 13+ where child sexual exploitation was a	3	2	3	15	7	7	9	9	5	7	6	7	3	➡ 0	7	15	Local indicator	Local indicator			
M8-QL	MASH	Percentage of referrals dealt with by MASH where time from referral received / recorded to completion by MASH was 24 hours / 1 working day or less	54%	70%	68%	63%	67%	88%	57%	50%	38%	40%	65%	89%	68%	↑ 26	64%	89%	Local indicator	Local indicator			
M5	MASH	Number of children receiving Universal Help services who are stepped up for Children In Need assessment	Revised measure from April 2015	Revised measure from April 2015	Revised measure from April 2015	Revised measure from April 2015	Revised measure from April 2015	Revised measure from April 2015	Revised measure from April 2015	Revised measure from April 2015	Revised measure from April 2015	17	26	14	13	n/a	18	26	tbc	tbc			
EH1	CIN	Number of children at end of period with Universal Help Plans, or undergoing Universal Help Assessments	Revised measure from April 2015	Revised measure from April 2015	Revised measure from April 2015	Revised measure from April 2015	Revised measure from April 2015	Revised measure from April 2015	Revised measure from April 2015	Revised measure from April 2015	Revised measure from April 2015	554	568	567	559	n/a	562	568	tbc	tbc			
EH2	CIN	Number of Children In Need at end of period (all open cases, excluding UHPs, UHAs, CPP and LAC)	Revised measure from April 2015	Revised measure from April 2015	Revised measure from April 2015	Revised measure from April 2015	Revised measure from April 2015	Revised measure from April 2015	Revised measure from April 2015	Revised measure from April 2015	Revised measure from April 2015	1788	1866	1976	2090	n/a	1930	2090	tbc	tbc			
EH5	CIN	Number of children open to the authority who have been missing at any point in the period	New measure from April 2015	New measure from April 2015	New measure from April 2015	New measure from April 2015	New measure from April 2015	New measure from April 2015	New measure from April 2015	New measure from April 2015	New measure from April 2015	12	15	15	13	n/a	14	15	tbc	tbc			
EH3	Assessments	Number of Single Assessments completed	320	197	278	368	357	415	299	325	310	226	317	240	270	↓ (16)	300	415	Local indicator	Local indicator			
EH4-QL	Assessments	Percentage of Single Assessments completed in 45 working days	83%	83%	77%	80%	90%	86%	84%	81%	94%	80%	70%	71%	72%	↓ -13	81%	94%	Local indicator	Local indicator			
CP1	Child Protection	Number of Section 47 enquiries started	203	123	225	266	205	175	149	150	206	137	156	130	124	↓ (39)	171	266	Local indicator	Local indicator			
CP2	Child Protection	Number of Initial Child Protection Conferences held, including Transfer-Ins, excluding temporary registrations	62	55	39	69	60	54	42	52	57	45	58	38	39	↓ (37)	51	69	Local indicator	Local indicator			
CP9	Child Protection	Number of Review Child Protection Conferences (RCPCs) in the month	New measure from April	New measure from April	New measure from April	New measure from April	New measure from April	New measure from April	New measure from April	New measure from April	New measure from April	17	24	23	27	n/a	23	27	Local indicator	Local indicator			
CP3-QL	Child Protection	Percentage of Initial Child Protection Conferences held within timescales	47%	58%	79%	75%	55%	81%	48%	87%	84%	49%	28%	24%	36%	↓ -23	59%	87%	75%	69%			
CP4	Child Protection	Percentage of Initial Child Protection Conferences resulting in a Child Protection Plan	77%	91%	77%	88%	93%	85%	98%	79%	88%	84%	93%	89%	74%	➡ (4)	87%	98%	tbc	tbc			
CP5-QL	Child Protection	Percentage of new Child Protection Plans (CPP) where child had previously been subject of a CPP at any time	23%	11%	5%	10%	12%	2%	38%	8%	7%	20%	29%	12%	45%	↑ 99	17%	45%	15%	16%			

Measure Ref	Performance Area	Description	Jul 2014	Aug 2014	Sep 2014	Oct 2014	Nov 2014	Dec 2014	Jan 2015	Feb 2015	Mar 2015	Apr 2015	May 2015	Jun 2015	Jul 2015	% change from same period last year	12 month average	Max. value in last 12 months	Latest SN (annual %, or annual figure / 12)	Latest national (annual %, or annual figure / 12)
CP6B	Child Protection	Number of children with a Child Protection Plan at the end of the month, excluding temporary registrations	263	300	302	320	346	380	385	388	389	387	392	376	359	↑ 37	360	392	Local indicator	Local indicator
CP7	Child Protection	Number of ceasing Child Protection Plans, excluding temporary registrations	43	13	31	42	34	12	43	36	49	43	57	51	47	→ 9	38	57	Local indicator	Local indicator
CP8-QL	Child Protection	Percentage of children subject to a Child Protection Plan seen in the last 14 calendar days	78%	56%	69%	74%	71%	57%	66%	68%	74%	77%	68%	73%	71%	→ -9	69%	77%	Local indicator	Local indicator
LAC1	Looked after Children	Number of Looked after Children at end of period	546	563	565	570	574	561	561	571	586	615	622	624	627	↑ 15	587	627	Local indicator	Local indicator
LAC7-QL	Looked after Children	Percentage of Looked after Children visited within timescales	62%	57%	53%	52%	57%	51%	58%	63%	77%	79%	79%	78%	71%	↑ 15	65%	79%	tbc	tbc
LAC8-QL	Looked after Children	Percentage of Looked after Children with an up to date Personal Education Plan	72%	70%	63%	60%	55%	56%	58%	60%	57%	43%	44%	51%	51%	↓ -29	56%	70%	tbc	tbc
LAC2	Looked after Children	Number of new Looked after Children (episodes)	34	34	28	15	22	11	17	19	22	37	15	20	17	↓ (50)	21	37	tbc	tbc
LAC3	Looked after Children	Number of ceasing Looked after Children (episodes)	12	17	25	11	18	24	17	10	8	6	10	11	14	↑ 17	14	25	tbc	tbc
LAC4-QL	Looked after Children	Number of children leaving care for permanence (where end reason was SGO (E43, E44) or adoption (E11, E12))	2	4	8	2	5	12	8	1	6	1	3	6	8	↑ 300	5	12	tbc	tbc
LAC5-QL	Looked after Children	Percentage of children leaving care for permanence (where end reason was Special Guardianship Order (SGO) (E43, E44) or adoption (E11, E12))	17%	24%	32%	18%	28%	50%	47%	10%	75%	17%	30%	55%	57%	↑ 242	37%	75%	tbc	tbc
LAC6	Looked after Children	Number of adoptions	2	2	7	0	3	12	7	1	6	0	2	3	6	↑ 200	4	12	tbc	tbc
LAC9	Looked after Children	IFA placements as a percentage of all looked after children	28%	30%	32%	31%	32%	33%	34%	32%	31%	31%	31%	32%	33%	↑ 16	32%	34%	tbc	tbc

Data notes

Single Assessments - all figures exclude SAs recorded as the vehicle for the RCPC report. The full year figures have been recalculated using 45 working days as the timescale.

CIN and EH numbers - withdrawn pending data accuracy work. Numbers for previous months may not be correct.

Step-up numbers - may also be affected by data accuracy issues.

LAC8 - Children in care for more than 28 days, over the age of 2 ½ with a PEP in the last six months are considered to have a valid PEP.